



WO 02



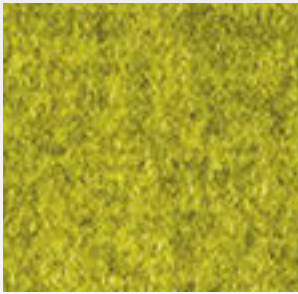
WM 104



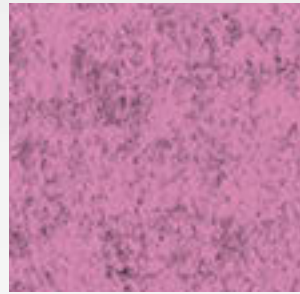
WM 120



WM 114



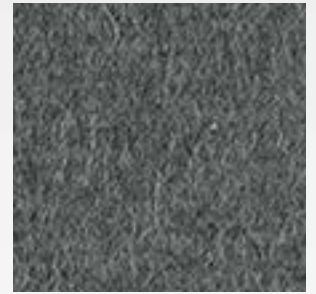
WM 105



WM 128



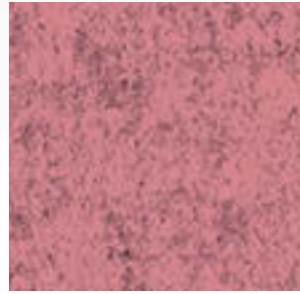
WM 126



WM 102



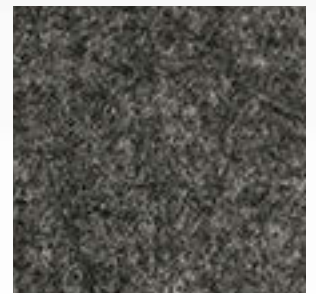
WM 124



WM 127



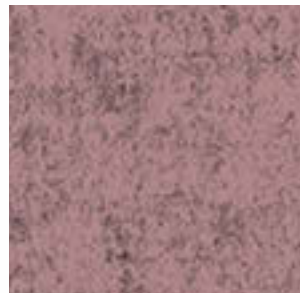
WM 106



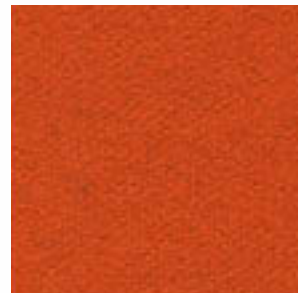
WM 112



WM 125



WM 132



WO 06



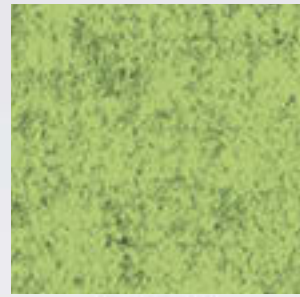
WM 137



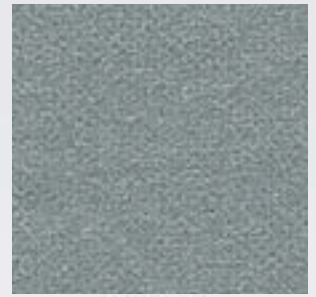
WM 129



WO 09



WM 139



WO 10



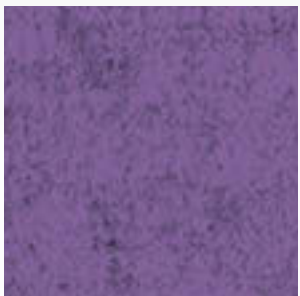
WM 135



WM 141



WM 136



WM 138



WO 12



WM 143



WM 122



WO 04



WM 101



WO 05



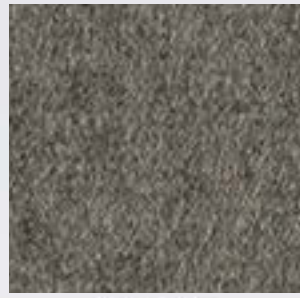
WM 140



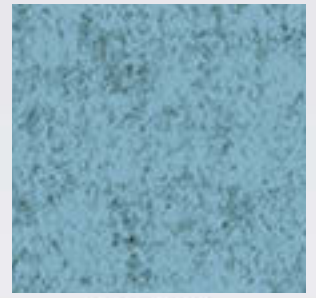
WM 131



WO 08



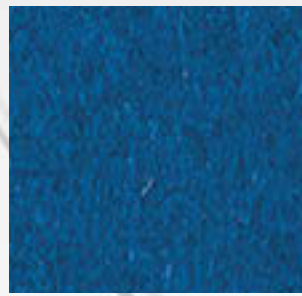
WM 103



WM 133



WM 111



WM 108



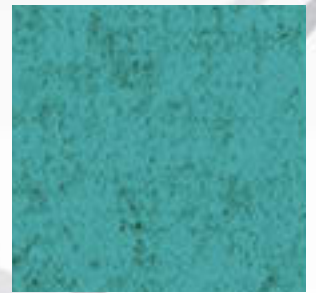
WM 142



WM 130



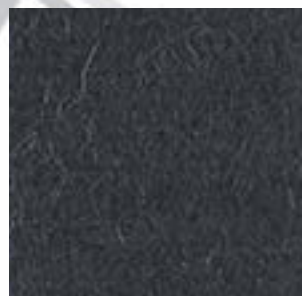
WO 11



WM 134



WO 01



WM 123



WO 07

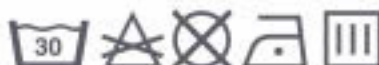


WO 03



I	UK	D	F	E
<b>Composizione</b> 100% Pura Lana Vergine	<b>Composition</b> 100% Pure New Wool	<b>Zusammensetzung</b> 100% Reine Schurwolle	<b>Materiale</b> 100% Pure Laine Vierge	<b>Composición</b> 100% Pura Lana Virgen
<b>Peso</b> 410 g/m <sup>2</sup> ± 15	<b>Weight</b> 410 g/m <sup>2</sup> ± 15	<b>Gewicht</b> 410 g/m <sup>2</sup> ± 15	<b>Poids</b> 410 g/m <sup>2</sup> ± 15	<b>Peso</b> 410 g/m <sup>2</sup> ± 15
<b>Altezza</b> 140 cm ± 5	<b>Width</b> 140 cm ± 5	<b>Breite</b> 140 cm ± 5	<b>Längeur</b> 140 cm ± 5	<b>Ancho</b> 140 cm ± 5
<b>Lunghezza Rotolo</b> 25 mt ±10%	<b>Roll lenght</b> 25 mt ±10%	<b>Rolle länge</b> 25 mt ±10%	<b>Longueur rotulea</b> 25 mt ±10%	<b>Longitud rollo</b> 25 mt ±10%
<b>Resistenza all'abrasione</b> >50000 cicli Martindale	<b>Abrasion Resistance</b> >50000 Martindale cycles	<b>Scheuerfestigkeit</b> >50000 Martindale Scheuertouren	<b>Résistance à l'abrasion</b> >50000 Martindale tours	<b>Resistencia a la abrasión</b> >50000 Martindale ciclos
<b>Resistenza alla luce</b> (EN ISO 105-B02)5	<b>Light Fastness</b> (EN ISO 105-B02)5	<b>Lichtechtheit</b> (EN ISO 105-B02)5	<b>Solidité à la lumière</b> (EN ISO 105-B02)5	<b>Solidez a la luz</b> (EN ISO 105-B02)5
<b>Resistenza allo sfregamento</b> (EN ISO 105-X12) Umido: 4/5 Secco: 5	<b>Fastness to Rubbing</b> (EN ISO 105-X12) Wet: 4/5 Dry: 5	<b>Reibechtheit</b> (EN ISO 105-X12) Nass: 4/5 Trocken: 5	<b>Solidité au frottement</b> (EN ISO 105-X12) Mouillé: 4/5 Sec: 5	<b>Solidez al rozamiento</b> (EN ISO 105-X12) Húmedo: 4/5 Seco: 5
<b>Infiammabilità</b> 1 IM UNI 9175 EN 1021-1:2006 EN 1021-2:2006 TB 117:2013 IMO BS5852 CRIB 5 ( solo su richiesta per Lanee Melange BS )	<b>Flammability</b> 1 IM UNI 9175 EN 1021-1:2006 EN 1021-2:2006 TB 117:2013 IMO BS5852 CRIB 5 ( Only on request for Lanee Melange BS )	<b>Feuersicherung</b> 1 IM UNI 9175 EN 1021-1:2006 EN 1021-2:2006 TB 117:2013 IMO BS5852 CRIB 5 ( Only on request for Lanee Melange BS )	<b>Flammabilité</b> 1 IM UNI 9175 EN 1021-1:2006 EN 1021-2:2006 TB 117:2013 IMO BS5852 CRIB 5 ( Only on request for Lanee Melange BS )	<b>Inflamabilidad</b> 1 IM UNI 9175 EN 1021-1:2006 EN 1021-2:2006 TB 117:2013 IMO BS5852 CRIB 5 ( Only on request for Lanee Melange BS )
<b>Assorbimento acustico:</b> UNI EN ISO 354:2003	<b>Acoustic Absorption:</b> UNI EN ISO 354:2003	<b>Schallabsorptions:</b> UNI EN ISO 354:2003	<b>absorption acoustique:</b> UNI EN ISO 354:2003	<b>absorción acústica:</b> UNI EN ISO 354:2003
<b>-Solo su richiesta:</b> idro-oleo repellente	<b>Only on request:</b> water repellency and oil repellency	<b>Nur Auf: anfrange:</b> hydrophobe und oleophobe	<b>Seulement sur demande:</b> hydrofuge et oléofuge	<b>Soló a petición:</b> repelencia al agua y repelencia al aceite
<b>Colore</b> Leggere differenze di colore fra una partita e l'altra sono da considerarsi normali	<b>Colour</b> Slight color differences between one lot and another have to be considered within commercial tolerance	<b>Farbabweichungen</b> Leichte farbunterschiede sind zwischen zwei Partien als normal su betrachten	<b>Coloris</b> Légères différences de couleur entre un lot et l'autre doivent être considérés comme étant normales	<b>Color</b> ligeras diferencias de color entre un lote y el otro son normales

 Stock Service  Cut Service



**GUARANTEE**  
**5**  
**YEARS**

