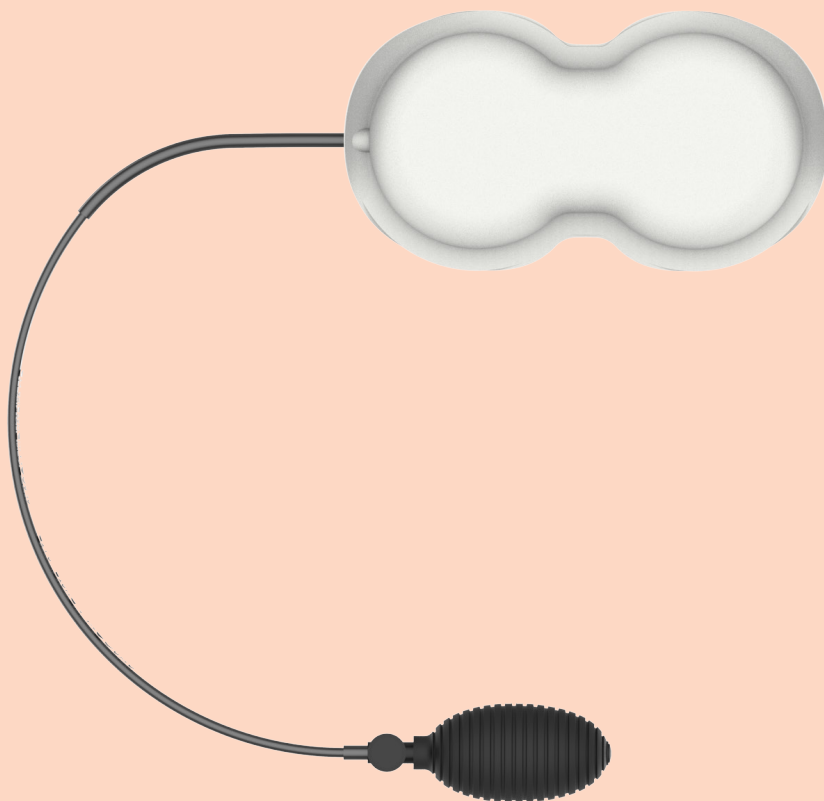


# SUSCOM

---

## LUMBUS



# SUSCOM | ABOUT US

At Suscom we focus and strive to meet our client's demands, for this reason, our in-house facilities allow us to be flexible and give us greater control over quality.

We believe that design and innovation is the key to our success. Our new production facilities is the first of its kind, with the option of automated castor fitting allowing us to tailor each product to suit our clients requirements.

As a company focused on lowering our environmental impact, it is important that our products also incorporate and reflect this ethos. With all of this in mind we have modified and updated many products to make them 100% recyclable.



# LUM | ABOUT

## ABOUT

LUMBUS by Suscom incorporates various technologies to provide innovative lumbar systems. We are continuously innovating to try and push the boundaries of lumbar technologies to provide both standard and bespoke systems to suit all users.

## WHY USE LUMBAR SUPPORTS?

With the number of back pain on the rise, the overall economic cost has also risen dramatically. The cost is now said to be in the billions and this has made employers understand the importance of lumbar support with working environments. Medical opinions are also linking and posture to a number of other health issues.

## KEY POINTS

Medical opinions agree that bad posture is directly attributed:

- Back Pain
- General Fatigue
- Poor Circulation
- Diminished Breathing
- Tension Headaches
- Appearance of Aging

## HOW LUMBUS BACK SUPPORT WORKS?

When we awake in the morning, our spine is aligned to typical 'S' shape curve. As the day progresses however, our spine begins to form of increasing curve. To change to our spine is more prevalent if we stay in a sedentary position, typical of working at a desk or with a keyboard. When sitting for prolonged periods of time is essential to change our seated to ensure alertness, prevention of stress on the lower back and general fatigue.

The inflatable LUMBUS has been specially designed to allow the chair user to make multiple adjustments throughout the day to the chair, to provide a variable seated position ensuring the 'S' curve position is correctly maintained.

## NEW TECHNOLOGIES AND TESTING

LUMBUS is always incorporating new technologies to prevent stress and improve efficiency in all environments. We are continuously innovating to provide the most ergonomic solutions available on the market and this doesn't just stop at inflatable lumbar but other technologies as well.

# LUM | APPLICATIONS

## APPLICATIONS FOR LUMBUS PRODUCTS

Lumbus Products are used in various different areas such as office seating, medical seating and also in the automotive industry.

The list of applications is growing as society has recognised the importance of lumbar supports within all environments.

To see whether LUMBUS is a product for your application please enquire.

## WHAT ARE THE ADVANTAGES OF LUMBUS

- Cost effective compared to alternatives offering the same support
- 10-15% more inflation compared to alternatives
- Specified material to prevent build up of heat
- Tested product
- Easy to use

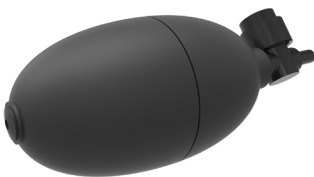
We work closely with LGA/TUV regarding pushing the boundaries of what is possible with lumbar supports. We feel strongly about setting industry standards and benchmarks regarding testing. For more information on the tests performed on the lumbar products we offer, please enquire.

## OPTIONS

- Standard Bulb 01

- Flat Sided Bulb

- Anti-Slip Bulb



LUM-CLIP  
Lumber Holder Clip

# LUM | SINGLE CELL



Single cell lumbar supports are the most effective way of creating a lumbar support for a particular area.

MODEL	INNER CELL WIDTH	INNER CELL HEIGHT	OUTER WIDTH	OUTER HEIGHT	TUBE LENGTH
LUM-200	210	110	260	160	500
LUM-300T	250	105	300	155	600
LUM-320	275	135	320	180	750
LUM-400	345	150	400	200	1000

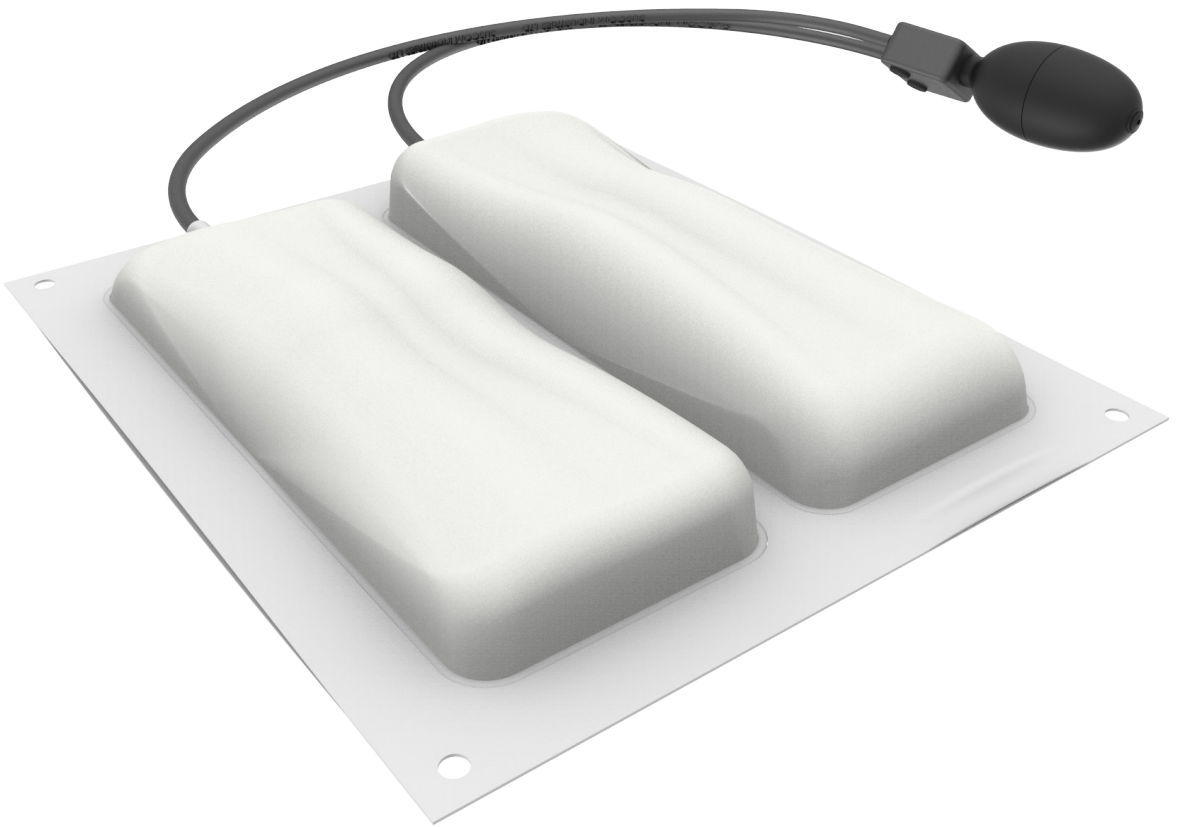
## OPTIONS

- Standard Bulb 01

- Flat Sided Bulb

- Anti-Slip Bulb

# LUM | MULTI CELL BACK



Multi cell lumbar bars are the most cost effective way to creating support for multiple areas. They can also be used to enhance or soften the support required. This can be done through design of the multi cell, or by simply adjusting lumbar areas independent of one another.

## OPTIONS

- Standard Bulb 01
- Flat Sided Bulb
- Anti-Slip Bulb

MODEL	INNER CELL WIDTHS	INNER CELL HEIGHTS	OUTER WIDTH	OUTER HEIGHT	TUBE LENGTHS
LUM-2/260	195	90	245	220	325

# LUM | BESPOKE CELL



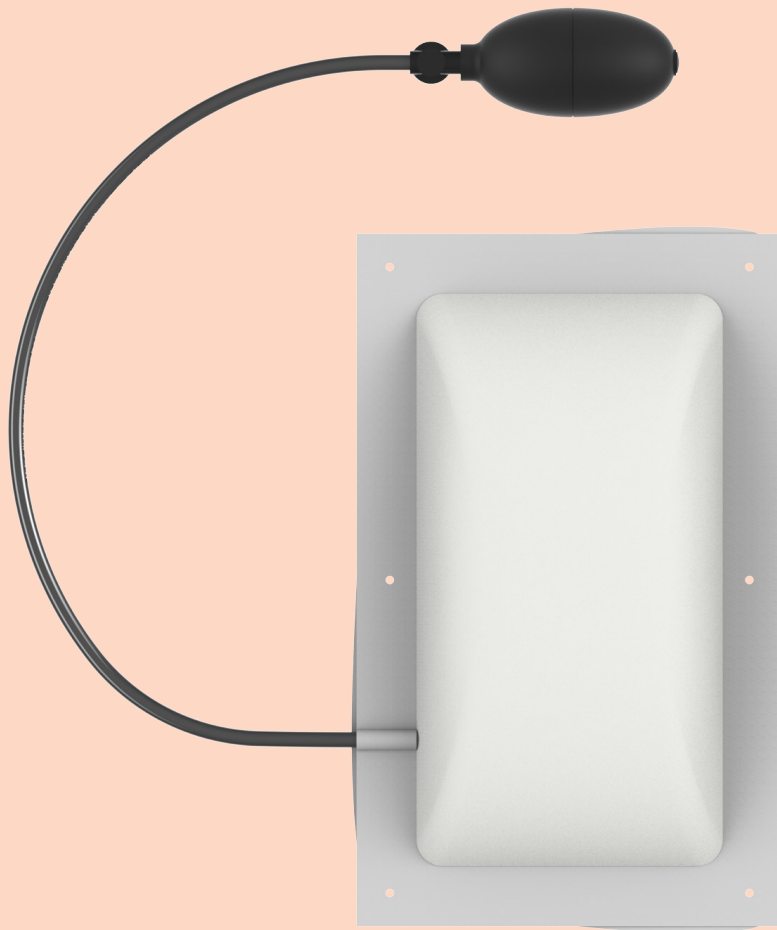
## CUSTOMISING YOUR LUMBUS

1. Hand bulb - Colour options
2. Hand bulb - Optional shapes
3. Bladder shapes
4. Tubing lengths

## ADVANTAGES OF BESPOKE

1. Cost effective tooling
2. Custom product to suit your needs
3. Client specification design

MODEL	INNER CELL WIDTHS	INNER CELL HEIGHTS	OUTER WIDTH	OUTER HEIGHT	TUBE LENGTHS
LUM-THORAX	215	237	300	275	480



**Suscom Industries Ltd.**

Unit 8 Leopold Street | Lamberhead Ind. Estate  
Pemberton | Wigan | WN5 8DH | United Kingdom

Web | [www.suscom-ind.co.uk](http://www.suscom-ind.co.uk)

Telephone | +44 (0)1942 221133

Email | [sales@suscom-ind.co.uk](mailto:sales@suscom-ind.co.uk)

